

# TRAINING – WOOD MANUFACTURING

## THE ROLE OF FITEC

FITEC is the Industry Training Organisation for the forest industries.

- ✓ FITEC helps identify skill and training needs
- ✓ FITEC helps create customised training plans
- ✓ FITEC facilitates training and assessment
- ✓ FITEC helps trainees achieve skills and qualifications
- ✓ FITEC promotes careers in the forest industries
- ✓ FITEC designs qualifications and quality assures national standards
- ✓ FITEC develops training and assessment resources

## WHY TRAIN?

Training is an investment in your business. Investing in the quality of your staff will help your company to stay competitive in a challenging global market.

## Upskilling

Learning both on and off the job counts towards a qualification and makes employees better at what they do.

## Partnership

Between the employer, the employee and FITEC.

## Assistance

FITEC helps companies administrate and manage training.

## Recognition

Captures and formally recognises prior learning and current competency.

## Results

Qualifications have been developed for industry by industry.

## HOW CAN TRAINING HELP?

- ✓ Maximise overall business productivity
- ✓ Improve workplace safety
- ✓ Improve equipment knowledge and operation
- ✓ Build a consolidated and valued team
- ✓ Support your team to reach their potential

## GREAT REASONS TO TRAIN

- ✓ Confidence with new technology
- ✓ Better equipment skills and knowledge
- ✓ Contribute valued skills to the team
- ✓ Improves work place safety practise
- ✓ Development of a career pathway
- ✓ Achieve recognition for abilities
- ✓ Job security and work place enjoyment

## GET STARTED

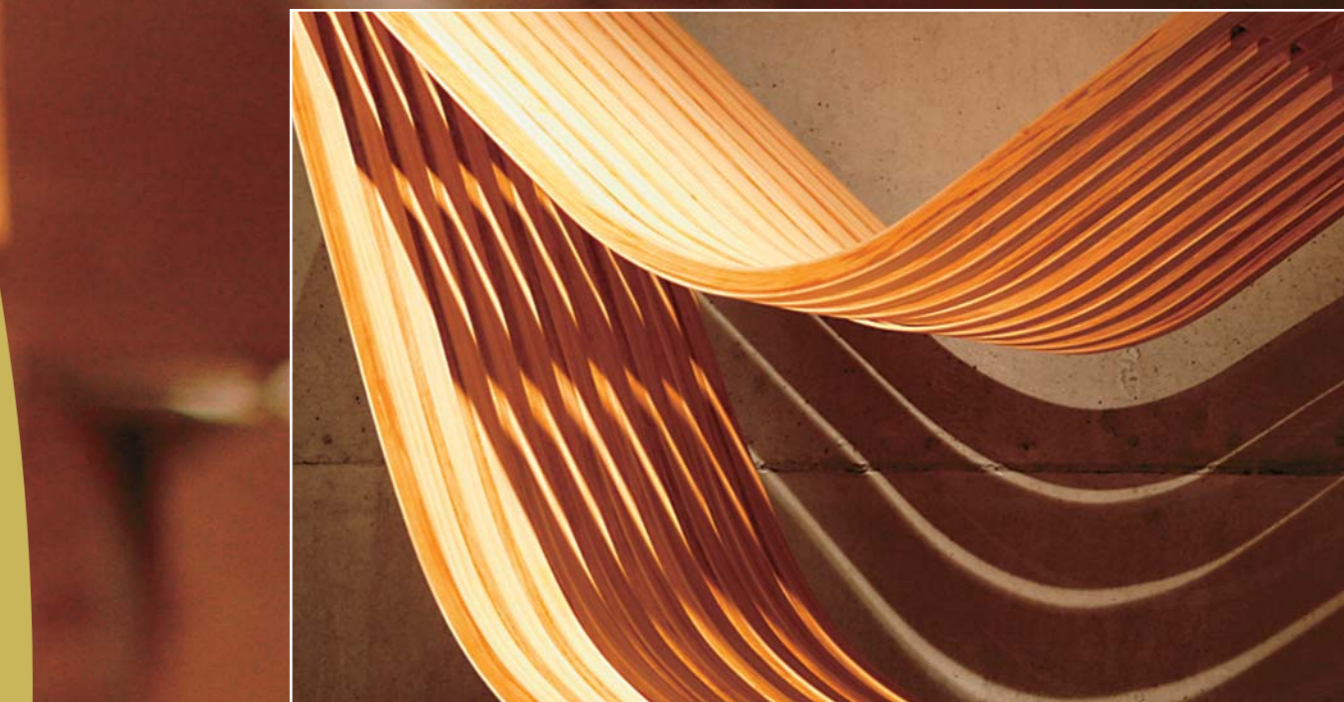
FITEC Regional Training Advisors are your link to information and advice on training in the wood manufacturing industry. FITEC can help create company, work area and individual training plans.

## CONTACT YOUR REGIONAL TRAINING ADVISOR TO FIND OUT MORE

**CALL FREE 0800 11 99 11**

FITEC HEAD OFFICE:  
Level 2, The Textile Centre,  
117-125 St Georges Bay Road,  
PO Box 137067 Parnell, Auckland, NZ  
Telephone 09 356 7250, Fax 09 356 7350  
info@fitec.org.nz

[www.fitec.org.nz](http://www.fitec.org.nz)



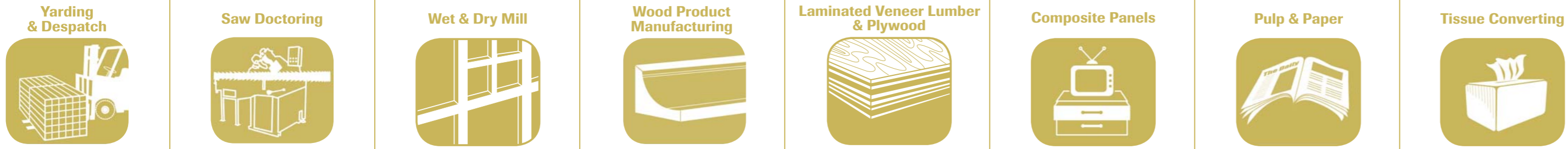
FITEC  
**WOOD MANUFACTURING QUALIFICATIONS**  
October 2007

Contact your Regional Training Advisor to find out more.

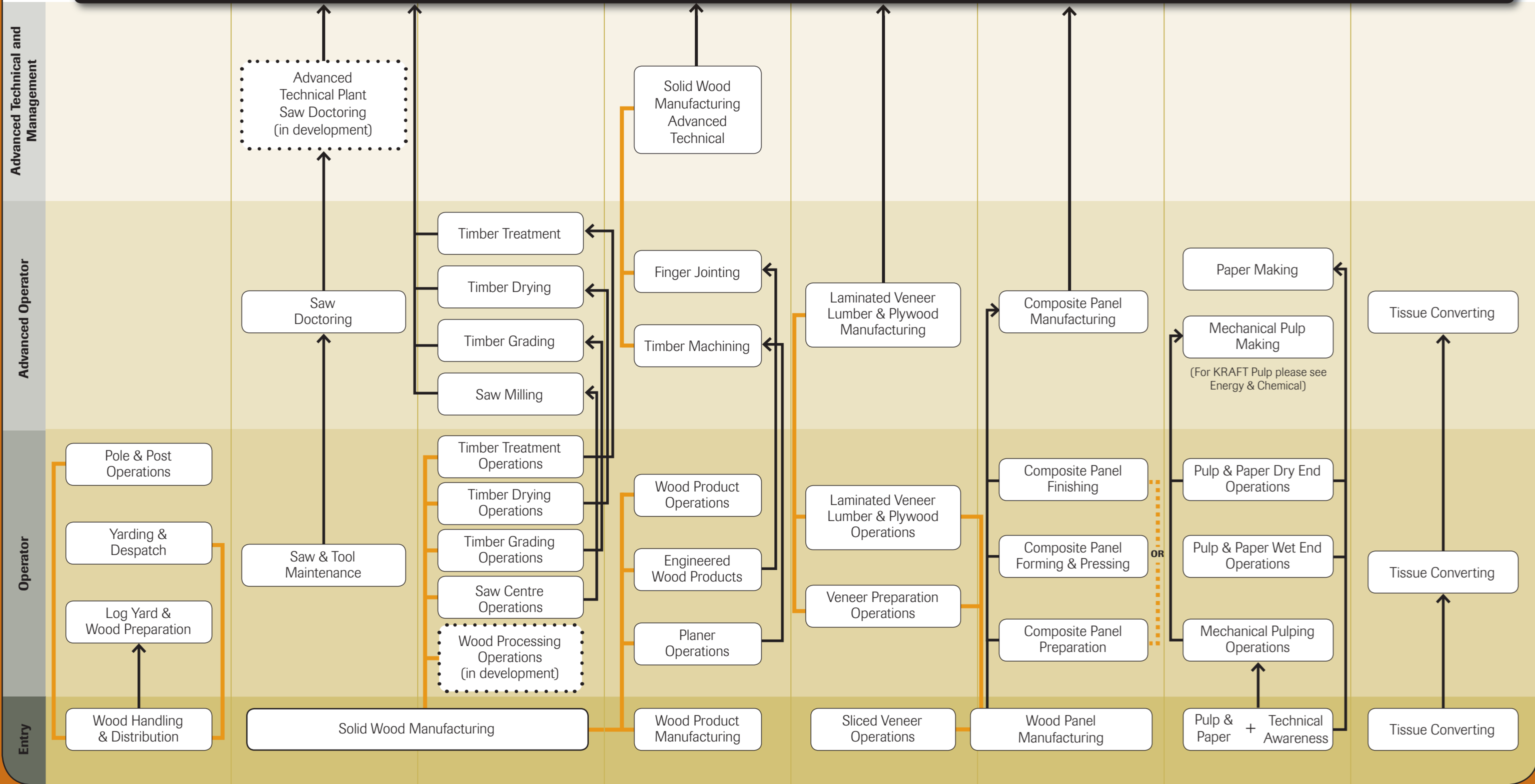
**Call Free Ph: 0800 11 99 11**

FITEC HEAD OFFICE: Level 2, The Textile Centre, 117-125 St Georges Bay Road, PO Box 137067, Parnell, Auckland, NZ  
Telephone: 09 356 7250, Fax: 09 356 7350, Email: info@fitec.org.nz [www.fitec.org.nz](http://www.fitec.org.nz)

**WOOD MANUFACTURING TRAINING PATHWAYS**



**DIPLOMA IN WOOD MANUFACTURING**



Wood Manufacturing / Generic Skills / Workplace Safety and Operation (Optional)

**COMPLEMENTARY TRAINING**

